



Description

Modern architectural luminaire HONEY R (round) features an original pattern of the simple form. HONEY R has the shape of a circle. HONEY R luminaire is designed to interiors that require demanding architectural solutions. It is perfect for hotel atriums, office receptions, architectural ateliers, conference rooms, corridors, halls in exclusive buildings and also cinemas, theatres or new-style shops in shopping centres

Basic information

Family: HONEY R
Product: HONEY R N-ML PLX DALI WH 840 46 D900
Index: BLS0000009479
Pictograms:

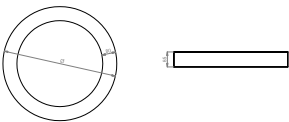


Lighting and electrical parameters

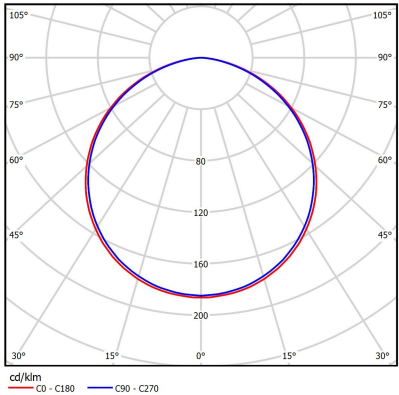
Light source	LED
Luminous flux LED [lm]	8910
LED power [W]	64
Luminaire luminous flux [lm]	4696
Power of luminaire [W]	70
Luminaire's light efficiency [lm/W]	67
Color of the light [K]	4000
CRI	>80
SDCM (LED sources)	3
Photobiological risk class (IEC/EN 62471)	RG0
Protection against electric shock	I
Protection degree	IP54
Voltage	220-240 V, 50-60 Hz
Lifetime of LED sources [h]	60000
Lx/By	L80/B10
Operating temperature range [°C]	5 ÷ 30
Driver	DALI Driver

Mechanical parameters:

Assembly	ceiling mounted with magnets
Material	aluminium
Color	white
Diffuser	PLX opalized
Impact resistant	IK04
Dimensions [mm]	Ø900 x 85



A graph of light



Technical data may be changed. Photos of the luminaires may differ from reality.
Date of last update: 25-04-2024