



Description

Modern architectural luminaire HONEY R (round) features an original pattern of the simple form. HONEY R has the shape of a circle. HONEY R luminaire is designed to interiors that require demanding architectural solutions. It is perfect for hotel atriums, office receptions, architectural ateliers, conference rooms, corridors, halls in exclusive buildings and also cinemas, theatres or new-style shops in shopping centres

Basic information

Family: **HONEY R**
Product: **HONEY R N-ML PLX DALI WH 840 15 D650**
Index: **BLS0000009470**
Pictograms:

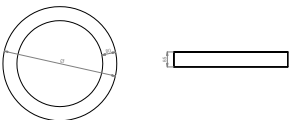


Lighting and electrical parameters

| | |
|--|---------------------|
| Light source | LED |
| Luminous flux LED [lm] | 2970 |
| LED power [W] | 21 |
| Luminaire luminous flux [lm] | 1565 |
| Power of luminaire [W] | 25 |
| Luminaire's light efficiency [lm/W] | 63 |
| Color of the light [K] | 4000 |
| CRI | >80 |
| SDCM (LED sources) | 3 |
| Photobiological risk class (IEC/EN 62471) | RG0 |
| Protection against electric shock | I |
| Protection degree | IP54 |
| Voltage | 220-240 V, 50-60 Hz |
| Lifetime of LED sources [h] | 60000 |
| Lx/By | L80/B10 |
| Operating temperature range [°C] | 5 ÷ 30 |
| Driver | DALI Driver |

Mechanical parameters:

| | |
|------------------------|------------------------------|
| Assembly | ceiling mounted with magnets |
| Material | aluminium |
| Color | white |
| Diffuser | PLX opalized |
| Impact resistant | IK04 |
| Dimensions [mm] | Ø650 x 85 |



A graph of light



Technical data may be changed. Photos of the luminaires may differ from reality.

Date of last update: 25-04-2024