



Description

ORCHID PRO luminaire is based on an anodised aluminium profile. The luminaire is equipped with the latest generation of LEDs with the highest, available on the market, luminous efficiency of LED sources > 190 lm/W (for 4000K). The LEDs used in the luminaire guarantee the highest energy efficiency of the lighting system, additionally the lifetime of LED sources enables 35 years of work at 8 hours per day! Leds with a color rendering index of CRI>80 allow for the use of luminaires in manufacturing, industrial and warehouse halls, parking lots.

Basic information

Family: ORCHID PRO N
Product: ORCHID PRO N PLX DALI ALU 830 15 1135
Index: BLS0000005133
Pictograms:

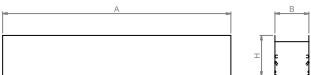


Lighting and electrical parameters

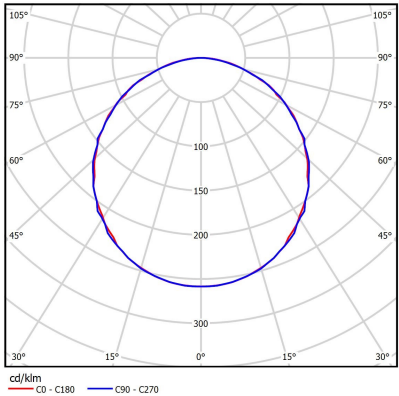
| | |
|---|---------------------|
| Light source | LED |
| Luminous flux LED [lm] | 2083 |
| LED power [W] | 10.9 |
| Luminaire luminous flux [lm] | 1540 |
| Power of luminaire [W] | 12.4 |
| Luminaire's light efficiency [lm/W] | 124 |
| Color of the light [K] | 3000 |
| CRI | >80 |
| SDCM (LED sources) | 3 |
| Photobiological risk class (IEC/EN 62471) | RG0 |
| Protection against electric shock | I |
| Protection degree | IP44 |
| Voltage | 220-240 V, 50-60 Hz |
| Lifetime of LED sources [h] | 150000 |
| Lx/By | L80/B10 |
| Operating temperature range [°C] | 5 ÷ 30 |
| Driver | DALI Driver |

Mechanical parameters:

| | |
|------------------|--------------------|
| Assembly | ceiling mounted |
| Material | aluminium |
| Color | anodized aluminium |
| Diffuser | PLX opalized |
| Impact resistant | IK06 |
| Weight [kg] | 1.95 |
| Dimensions [mm] | 1135 x 60 x 72 |



A graph of light



Technical data may be changed. Photos of the luminaires may differ from reality.
Date of last update: 14-05-2024