



Description

ORCHID PRO luminaire is based on an anodised aluminium profile. The luminaire is equipped with the latest generation of LEDs with the highest, available on the market, luminous efficiency of LED sources > 190 lm/W (for 4000K). The LEDs used in the luminaire guarantee the highest energy efficiency of the lighting system, additionally the lifetime of LED sources enables 35 years of work at 8 hours per day! Leds with a color rendering index of CRI>80 allow for the use of luminaires in manufacturing, industrial and warehouse halls, parking lots.

Basic information

Family: ORCHID PRO N
Product: ORCHID PRO N MPRM DALI ALU 840 36 1135
Index: BLS0000005110
Pictograms:

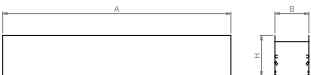


Lighting and electrical parameters

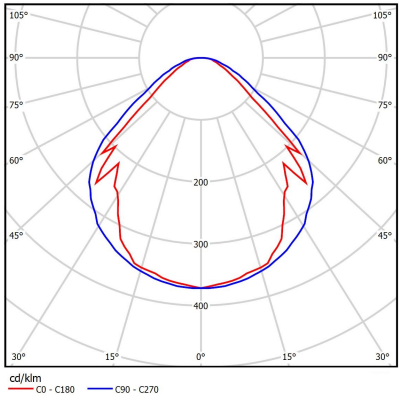
Light source	LED
Luminous flux LED [lm]	4480
LED power [W]	21.8
Luminaire luminous flux [lm]	3690
Power of luminaire [W]	23.8
Luminaire's light efficiency [lm/W]	155
Color of the light [K]	4000
CRI	>80
SDCM (LED sources)	3
Photobiological risk class (IEC/EN 62471)	RG0
Protection against electric shock	I
Protection degree	IP44
Voltage	220-240 V, 50-60 Hz
Lifetime of LED sources [h]	150000
Lx/By	L80/B10
Operating temperature range [°C]	5 ÷ 30
Driver	DALI Driver

Mechanical parameters:

Assembly	ceiling mounted
Material	aluminium
Color	anodized aluminium
Diffuser	MPRM microprism
Impact resistant	IK06
Weight [kg]	1.95
Dimensions [mm]	1135 x 60 x 72



A graph of light



Technical data may be changed. Photos of the luminaires may differ from reality.
Date of last update: 14-05-2024