

Description

Recessed luminaire DAISY is a modernistic LED panel intended for mounting in the dropped ceiling (with the help of additional accessories directly on ceilings) or as suspended. DAISY luminaire is made out of aluminium which is lacquered white. DAISY has highly-efficient LED light sources and its diffuser is available in variants: PLX or MPRM. The recommended usage of DAISY is among others: public buildings, schools, universities or public administration facilities.

Basic information

Family: DAISY
Product: DAISY P PLX EU WH IP20/44 840 50 596
Index: BLS0000003183
Pictograms:

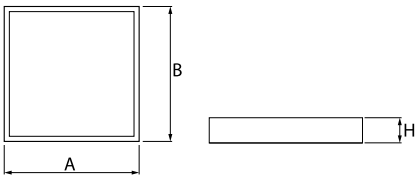


Lighting and electrical parameters

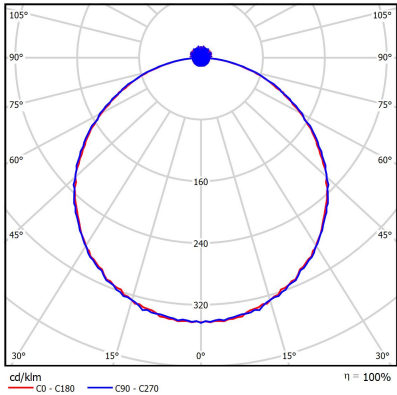
Light source	LED
Luminaire luminous flux [lm]	5085
Power of luminaire [W]	41
Luminaire's light efficiency [lm/W]	124
Color of the light [K]	4000
CRI	>80
SDCM (LED sources)	3
Photobiological risk class (IEC/EN 62471)	RG0
Protection against electric shock	II
Protection degree	IP20/44
Voltage	220..240 V, 50..60 Hz
Lifetime of LED sources [h]	70000
Lx/By	L80/B50
Operating temperature range [°C]	5 ÷ 30
Driver	LED Driver

Mechanical parameters:

Assembly	recessed into the modular ceiling
Material	aluminium
Color	white
Diffuser	PLX opalized
Impact resistant	IK04
Dimensions [mm]	595 x 595 x 29



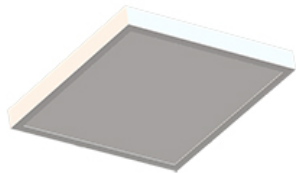
A graph of light



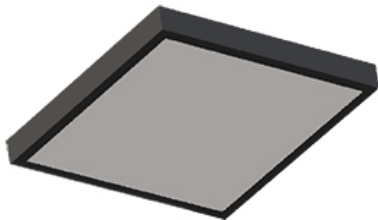
Technical data may be changed. Photos of the luminaires may differ from reality.
Date of last update: 25-04-2024

Accessories

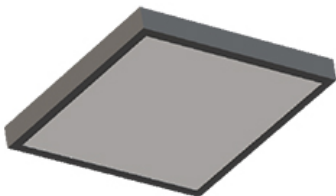
Index	BLS0000004808
Name	Ramka nastradowa Daisy/DaisyR WH 605x605x65



Index	BLS0000004805
Name	Ramka nastradowa Daisy/DaisyR BL 605x605x65



Index	BLS0000004806
Name	Ramka nastradowa Daisy/DaisyR GR 605x605x65



Index	BLS0000004807
Name	Ramka nastradowa Daisy/DaisyR ANT 605x605x65

Index	1000245
Name	ZAWIESZENIE TYPU Y DO PANELI LED 1,5M