



Description

Surface-mounted luminary ORCHID is made out of anodized aluminium profile. ORCHID luminary is recommended for: office spaces, schools, universities or public administration buildings etc.

Basic information

Family: ORCHID N  
Product: ORCHID N MPRM DALI ALU 830 17 1135  
Index: BLS0000002967  
Pictograms:

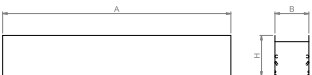


Lighting and electrical parameters

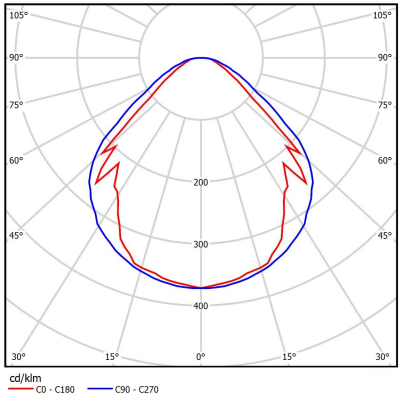
Light source	LED
Luminous flux LED [lm]	2129
LED power [W]	11
Luminaire luminous flux [lm]	1753
Power of luminaire [W]	13
Luminaire's light efficiency [lm/W]	135
Color of the light [K]	3000
CRI	>80
SDCM (LED sources)	3
Photobiological risk class (IEC/EN 62471)	RG0
Protection against electric shock	I
Protection degree	IP44
Voltage	220-240 V, 50-60 Hz
Lifetime of LED sources [h]	150000
Lx/By	L80/B50
Operating temperature range [°C]	5 ÷ 30
Driver	DALI Driver

Mechanical parameters:

Assembly	ceiling mounted
Material	aluminium
Color	anodized aluminium
Diffuser	MPRM microprism
Impact resistant	IK06
Weight [kg]	1.95
Dimensions [mm]	1135 x 60 x 72



A graph of light



Technical data may be changed. Photos of the luminaires may differ from reality.  
Date of last update: 25-04-2024