



Description

Surface-mounted luminary ORCHID is made out of anodized aluminium profile. ORCHID luminary is recommended for: office spaces, schools, universities or public administration buildings etc.

Basic information

Family: ORCHID N
Product: ORCHID N MPRM BL 830 70 2255
Index: BLS0000002637
Pictograms:

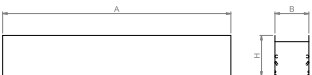


Lighting and electrical parameters

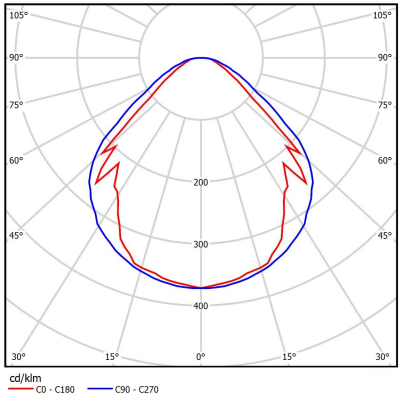
| | |
|---|---------------------|
| Light source | LED |
| Luminous flux LED [lm] | 8516 |
| LED power [W] | 44 |
| Luminaire luminous flux [lm] | 7014 |
| Power of luminaire [W] | 48 |
| Luminaire's light efficiency [lm/W] | 146 |
| Color of the light [K] | 3000 |
| CRI | >80 |
| SDCM (LED sources) | 3 |
| Photobiological risk class (IEC/EN 62471) | RG0 |
| Protection against electric shock | I |
| Protection degree | IP44 |
| Voltage | 220-240 V, 50-60 Hz |
| Lifetime of LED sources [h] | 150000 |
| Lx/By | L80/B50 |
| Operating temperature range [°C] | 5 ÷ 30 |
| Driver | LED Driver |

Mechanical parameters:

| | |
|------------------|-----------------|
| Assembly | ceiling mounted |
| Material | aluminium |
| Color | black |
| Diffuser | MPRM microprism |
| Impact resistant | IK06 |
| Weight [kg] | 3.65 |
| Dimensions [mm] | 2255 x 60 x 72 |



A graph of light



Technical data may be changed. Photos of the luminaires may differ from reality.
Date of last update: 25-04-2024