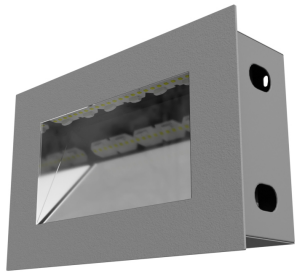


NEMESIA IN OD RT



Description

Outdoor architectural luminaire NEMESIA IN is perfect for creating lighting effects on elevations and highlighting selected features. This luminaire is mounted using assembly box included in the set. The body of NEMESIA IN is made from aluminium and is lacquered in specialistic facade paint that is resistant to any kind of weather. Different LED colours are also possible. NEMESIA IN luminaire is highly energy-efficient thanks to its high-performance components. Product features high ingress protection IP65. Its ergonomic and functional shape enables to use of NEMESIA IN in practically every kind of building. The assembly and access to the inside is very easy. It is ideal to emphasize the character of the building, it plays a role of secondary lighting, which makes NEMESIA IN a great outdoor lighting decoration with a simple form and aesthetic look.

Basic information

Family: **NEMESIA IN OD RT**
Product: **NEMESIA IN OD RT GR IP65 840 6 280**
Index: **BLS0000002266**
Pictograms:

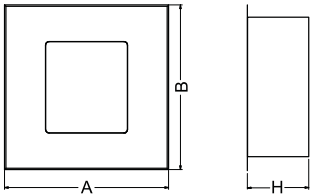


Lighting and electrical parameters

Light source	LED
Luminous flux LED [lm]	740
LED power [W]	3.9
Luminaire luminous flux [lm]	606
Power of luminaire [W]	4.5
Luminaire's light efficiency [lm/W]	135
Color of the light [K]	4000
CRI	>80
SDCM (LED sources)	5
Protection against electric shock	I
Protection degree	IP65
Voltage	220-240 V, 50-60 Hz
Lifetime of LED sources [h]	50000
Lx/By	L70/B50
Operating temperature range [°C]	-25 ÷ 30
Driver	LED Driver

Mechanical parameters:

Assembly	wall-mounted
Material	aluminium
Color	gray
Diffuser	PMMA transparent
Impact resistant	IK09
Dimensions [mm]	280 x 180 x 100



A graph of light