



Description

Industrial luminaire IVY works ideally in production plants or other manufacturing facilities. There are two possible variants of mounting: suspended and eventually mounted on the ceiling (with use of specially prepared holders). IVY is made out of anodized aluminium. LED light sources are protected with hardened glass. The construction enables this luminaire to work in conditions where the temperature falls to -35 °C or reaches +50 °C. The additional regulated mounting bracket is optional. IVY luminaire has high ingress protection (IP66) and high protection against mechanical impact (IK10). IVY is recommended to industrial buildings, such as production hall, magazines, warehouses and also sports hall or trade areas.

Basic information

Family: IVY  
Product: IVY Z OPT 30X90 IP66 840 49 308  
Index: BLS0000001433  
Pictograms:

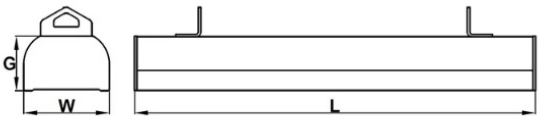


Lighting and electrical parameters

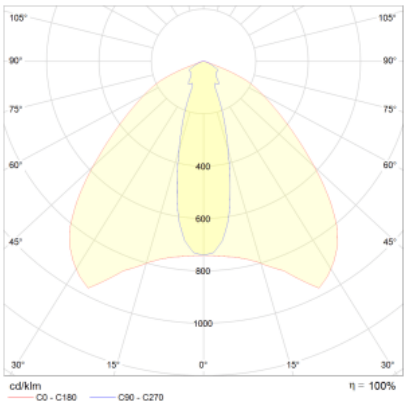
Light source	LED
Luminaire luminous flux [lm]	4987
Power of luminaire [W]	30
Luminaire's light efficiency [lm/W]	166
Color of the light [K]	4000
CRI	>80
Protection against electric shock	I
Protection degree	IP66
Voltage	220-240 V, 50-60 Hz
Lifetime of LED sources [h]	80000
Lx/By	L80/B50
Operating temperature range [°C]	-35 ÷ +50
Driver	LED Driver

Mechanical parameters:

Assembly	pendant
Material	aluminium
Color	anodized aluminium
Diffuser	lenses 30° x 90°
Impact resistant	IK10
Dimensions [mm]	308 x 102 x 64



A graph of light

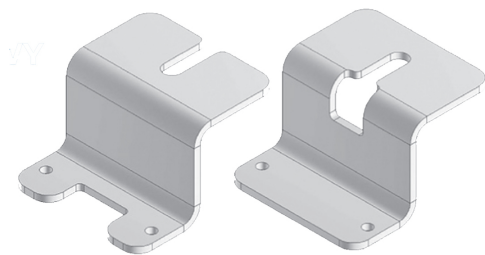


Technical data may be changed. Photos of the luminaires may differ from reality.

Date of last update: 25-04-2024

# Accessories

Index	U-NAT-IVY
Name	UCHWYT NATYNKOWY IVY



Index	U-REG-IVY
Name	UCHWYT REGULOWANY IVY

