



Description

Industrial luminaire IVY works ideally in production plants or other manufacturing facilities. There are two possible variants of mounting: suspended and eventually mounted on the ceiling (with use of specially prepared holders). IVY is made out of anodized aluminium. LED light sources are protected with hardened glass. The construction enables this luminaire to work in conditions where the temperature falls to -35 °C or reaches +50 °C. The additional regulated mounting bracket is optional. IVY luminaire has high ingress protection (IP66) and high protection against mechanical impact (IK10). IVY is recommended to industrial buildings, such as production hall, magazines, warehouses and also sports hall or trade areas.

Basic information

Family: IVY
Product: IVY Z SM IP66 840 45 308
Index: BLS0000001430
Pictograms:

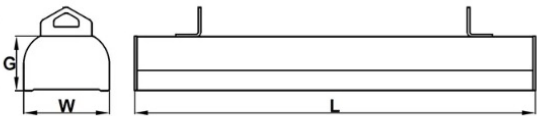


Lighting and electrical parameters

| | |
|-------------------------------------|---------------------|
| Light source | LED |
| Luminaire luminous flux [lm] | 4588 |
| Power of luminaire [W] | 30 |
| Luminaire's light efficiency [lm/W] | 153 |
| Color of the light [K] | 4000 |
| CRI | >80 |
| Protection against electric shock | I |
| Protection degree | IP66 |
| Voltage | 220-240 V, 50-60 Hz |
| Lifetime of LED sources [h] | 80000 |
| Lx/By | L80/B50 |
| Operating temperature range [°C] | -35 ÷ +50 |
| Driver | LED Driver |

Mechanical parameters:

| | |
|------------------|--------------------|
| Assembly | pendant |
| Material | aluminium |
| Color | anodized aluminium |
| Diffuser | SM milky glass |
| Impact resistant | IK10 |
| Dimensions [mm] | 308 x 102 x 64 |

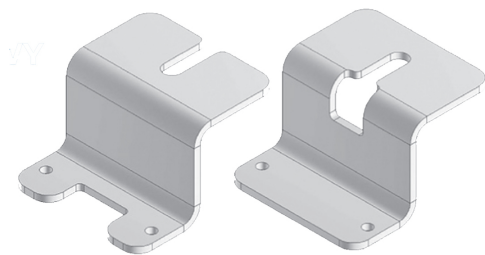


A graph of light

Technical data may be changed. Photos of the luminaires may differ from reality.
Date of last update: 25-04-2024

Accessories

| | |
|-------|----------------------|
| Index | U-NAT-IVY |
| Name | UCHWYT NATYNKOWY IVY |



| | |
|-------|-----------------------|
| Index | U-REG-IVY |
| Name | UCHWYT REGULOWANY IVY |

