

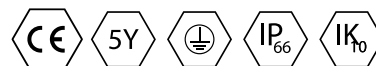


## Description

Industrial luminaire IVY works ideally in production plants or other manufacturing facilities. There are two possible variants of mounting: suspended and eventually mounted on the ceiling (with use of specially prepared holders). IVY is made out of anodized aluminium. LED light sources are protected with hardened glass. The construction enables this luminaire to work in conditions where the temperature falls to  $-35^{\circ}\text{C}$  or reaches  $+50^{\circ}\text{C}$ . The additional regulated mounting bracket is optional. IVY luminaire has high ingress protection (IP66) and high protection against mechanical impact (IK10). IVY is recommended to industrial buildings, such as production hall, magazines, warehouses and also sports hall or trade areas.

## Basic information

Family: **IVY**  
 Product: **IVY Z OPT90 IP66 840 153 908**  
 Index: **BLS0000001399**  
 Pictograms:

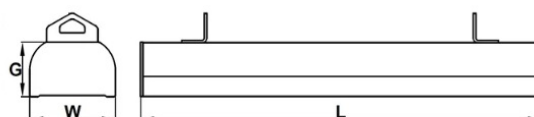


## Lighting and electrical parameters

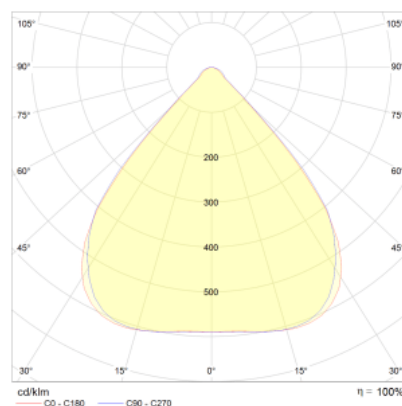
Light source	LED
<b>Luminaire luminous flux [lm]</b>	<b>15390</b>
Power of luminaire [W]	90
<b>Luminaire's light efficiency [lm/W]</b>	<b>171</b>
Color of the light [K]	4000
<b>CRI</b>	<b>&gt;80</b>
Protection against electric shock	I
<b>Protection degree</b>	<b>IP66</b>
Voltage	220-240 V, 50-60 Hz
<b>Lifetime of LED sources [h]</b>	<b>80000</b>
Lx/By	L80/B50
<b>Operating temperature range [°C]</b>	<b>-35 ÷ +50</b>
Driver	LED driver

## Mechanical parameters:

Assembly	pendant
<b>Material</b>	<b>aluminum</b>
Color	anodized aluminum
<b>Diffuser</b>	<b>lenses 90°</b>
Impact resistant	IK10
<b>Dimensions [mm]</b>	<b>908 x 102 x 64</b>



## A graph of light

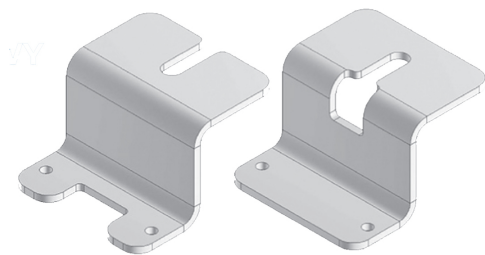


Technical data may be changed. Photos of the luminaires may differ from reality.

Date of last update: 01-08-2025

# Accessories

Index	U-NAT-IVY
Name	UCHWYT NATYNKOWY IVY



Index	U-REG-IVY
Name	UCHWYT REGULOWANY IVY

