



Description

Surface-mounted luminaire ORCHID is made out of anodized aluminium profile. ORCHID luminaire is recommended for: office spaces, schools, universities or public administration buildings etc.

Basic information

Family: ORCHID N
Product: ORCHID N PLX DALI WH 840 33 1135
Index: BLS0000000628
Pictograms:

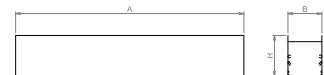


Lighting and electrical parameters

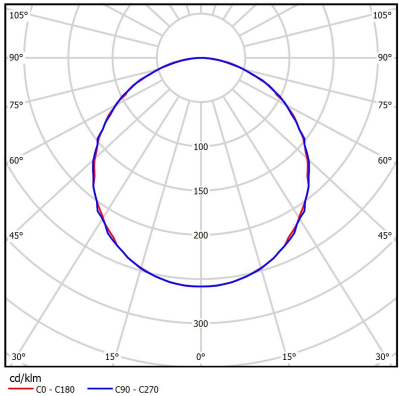
| | |
|---|---------------------|
| Light source | LED |
| Luminous flux LED [lm] | 4484 |
| LED power [W] | 22 |
| Luminaire luminous flux [lm] | 3316 |
| Power of luminaire [W] | 24 |
| Luminaire's light efficiency [lm/W] | 138 |
| Color of the light [K] | 4000 |
| CRI | >80 |
| SDCM (LED sources) | 3 |
| Photobiological risk class (IEC/EN 62471) | RG0 |
| Protection against electric shock | I |
| Protection degree | IP44 |
| Voltage | 220-240 V, 50-60 Hz |
| Lifetime of LED sources [h] | 150000 |
| Lx/By | L80/B50 |
| Operating temperature range [°C] | 5 ÷ 30 |
| Driver | DALI Driver |

Mechanical parameters:

| | |
|------------------|-----------------|
| Assembly | ceiling mounted |
| Material | aluminium |
| Color | white |
| Diffuser | PLX opalized |
| Impact resistant | IK06 |
| Weight [kg] | 1.95 |
| Dimensions [mm] | 1135 x 60 x 72 |



A graph of light



Technical data may be changed. Photos of the luminaires may differ from reality.
Date of last update: 25-04-2024