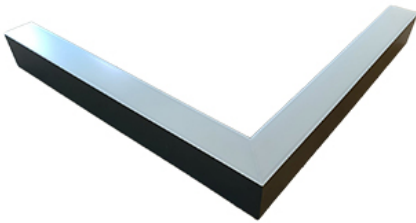


ORCHID PRO PZ W



Architectural Bee Art luminary LOBELIA is a lighting luminary that is equipped with the highly-efficient LED lighting sources. LOBELIA is made out of aluminium profile. LOBELIA luminaires are perfect to highlight the character of representative places; that have to maintain their elegant form, such as: entry area, receptions, restaurants, corridors etc.

Parameters:

Name	Luminaire luminous flux [lm]	Power of luminaire [W]	Color [K]	Dimensions A x B x H [mm]
ORCHID PRO W 48W 4x1200	6863 / 7379 / 6162 / 6626	47.6	3000 / 4000	4x1145 x 60 x 72
ORCHID PRO W 94W 4x1200	13726 / 14759 / 12325 / 13252	94.2	3000 / 4000	4x1145 x 60 x 72

Lighting and electrical parameters:

Light source	LED
Voltage	220-240 V, 50-60 Hz
Lifetime of LED sources [h]	150000
Lx/By	L80/B10
CRI	>80
SDCM	3
Photobiological risk class	RG0
Operating temperature range [°C]	5 ÷ 30
Driver	LED Driver

Mechanical data:

Material	aluminium
Color	white
	anodized aluminium *
Diffuser	MPRM microprism
	PLX opalized

Technical data may be changed. Photos of the luminaires may differ from reality.
Date of last update: 25-04-2024