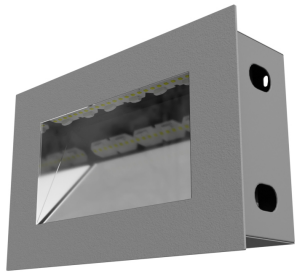


NEMESIA IN OD RT



Outdoor architectural luminary NEMESIA IN is perfect for creating lighting effects on elevations and highlighting selected features. This luminary is mounted using assembly box included in the set. The body of NEMESIA IN is made from aluminium and is lacquered in specialistic facade paint that is resistant to any kind of weather. Different LED colours are also possible. NEMESIA IN luminary is highly energy-efficient thanks to its high-performance components. Product features high ingress protection IP65. Its ergonomic and functional shape enables to use of NEMESIA IN in practically every kind of building. The assembly and access to the inside is very easy. It is ideal to emphasize the character of the building, it plays a role of secondary lighting, which makes NEMESIA IN a great outdoor lighting decoration with a simple form and aesthetic look.

Parameters:

Name	Luminaire luminous flux [lm]	Power of luminaire [W]	Color [K]	Dimensions A x B x H [mm]
NEMESIA IN OD RT 5W 280	606	4.5	4000	280 x 180 x 100
NEMESIA IN OD RT 7W 280	852	6.7	4000	280 x 180 x 100
NEMESIA IN OD RT 10W 280	1155	9.5	4000	280 x 180 x 100

Lighting and electrical parameters:

Light source	LED
Voltage	220-240 V, 50-60 Hz
Lifetime of LED sources [h]	50000
Lx/By	L70/B50
CRI	>80
SDCM	5
Operating temperature range [°C]	-25 ÷ 30
Driver	LED Driver

Mechanical data:

Material	aluminium
Color	gray
Diffuser	PMMA transparent

Technical data may be changed. Photos of the luminaires may differ from reality.
Date of last update: 25-04-2024